

TiffView Manual

TiffView in a Nutshell

Overview

TiffView is small and handy yet full-featured TIFF image viewer.

TiffView runs on a wide handheld range running Palm OS 5 or greater. Your device can have any screen resolution and orientation (160x160, 320x320, 320x480 portrait and landscape).

TiffView supports multipage TIFF images as well as single images.

TiffView can store images to handheld's memory.

Minimum requirements for your handheld are: Palm OS 5 or greater, 450K free memory, color screen, memory card.

Installation

Download TiffView **zip** or **sit** archive.

Unpack the archive and install program file (tiffview.prc) onto your Palm handheld using your palm installation tool, for example HotSync.

Getting images to a handheld

Often you have some images on your desktop computer, but would also like to have them on your handheld computer. This section describes how you can copy images from desktop computer to handheld, if the handheld has an expansion card.

Expansion card is a small flash-memory card, which is inserted into the handheld's expansion slot. It can be Secure Digital Card, Multimedia Card or other - it depends on handheld's model.

- **Using Palm Quick Install**

The easiest way to copy images from the desktop computer to the handheld's expansion card is using synchronization software, like Palm Desktop or Palm Quick Install (this software is shipped with handheld itself on special Installation CD-ROM disk).

With Palm Quick Install you have just to drag&drop your images to Quick Install's window. Do not forget to choose correct destination: not **Handheld**, but **Expansion Card**.

After this put your handheld into the cradle and push the **HotSync** button. All images will be copied to the

Expansion Card.

- **Using memory card reader**

Card reader is a small device, which can be connected to a desktop computer (or laptop) via USB or other communication cable. You can put your memory card into this device. For the operating system (Windows, for example) the card will be displayed as Removable Drive.

All you have to do is to copy your images onto this drive, then take the memory card out of the card reader and put it into your handheld's expansion slot. After this you can view your images on the handheld using TiffView.

- **Card-mounting software**

If you neither have a flash card reader device, nor want to use standard synchronization software, you can go other way. There are few programs, which make it possible to mount the expansion card of the handheld directly to a desktop computer. In this case handheld's expansion card is displayed as new Removable Drive of your desktop computer. Afterwards you can copy your images on this disk the same way you do with a memory card reader.

For example, you can use Softick Card Export II to access SD/MMC card inserted into Palm OS device as a logical disk on the Windows desktop. Card Export II emulates USB Mass Storage device (like USB card reader, USB flash drives etc) and doesn't require any additional drivers on modern desktop systems. With Card Export II you can transfer Palm OS applications, images, mp3 files to the card or just use the memory card as a floppy for any data. After connecting card is accessible as another removable disk in Windows Explorer.

Working with TiffView

TiffView provides you very familiar interface to make it a fun using it.

- **Viewing images**

TiffView can view a single image alone or a couple of images in a slideshow. Also you can view multipage TIFF's single page or a couple of the pages in a slideshow. For details see TiffView Reference: Open and Run Slide Show correspondingly. Additionally you can assign open action to single, double or long tap (for details see File List Options in TiffView Reference). Also you can set slideshow options like delay, order, etc. (for details see TiffView Reference, chapter Slide Show Options).

TiffView provides popup toolbar for browsing open picture. It can zoom and rotate images and fit them to the screen. For details see Image View in TiffView Reference.

Also you can set different viewing settings like auto zoom, background, etc. in Image View Options dialog window. For details see Image View Options in TiffView Reference.

- **Browsing images**

With TiffView you can rename or remove your image files, copy or move them to any folder including internal memory, create a new folder on the memory card. For details see Toolbar in TiffView Reference.

Also you can browse multipage TIFF images like folders. To explore files and folders easily you can set tap settings for this and other actions using File List Options dialog window. For details see TiffView Reference, chapter File List View Options.

Additionally TiffView provides multiselect option to perform with a couple of files simultaneously. For details see chapters File List and Multiselect in TiffView Reference.

TiffView has different view modes of browsing files and folders, including thumbnails (for details see TiffView Reference, chapter File List). Also you can set the font for each of these modes (for details see TiffView Reference, chapter Font Options).

- **Transferring images**

TiffView allows you to send or beam images to another device. For details see TiffView Reference, chapters Send and Beam correspondingly.

- **Receiving images**

TiffView features Exchange Manager support, which allows you to receive and view images from Bluetooth, IR connections and email attachments (tested with SnapperMail and VersaMail). For details see Exchange Options in TiffView Reference.

To open email attachment from VersaMail tap on the yellow icon before the filename and select Open from popup menu. Then the list of available applications will appear with TiffView in it.

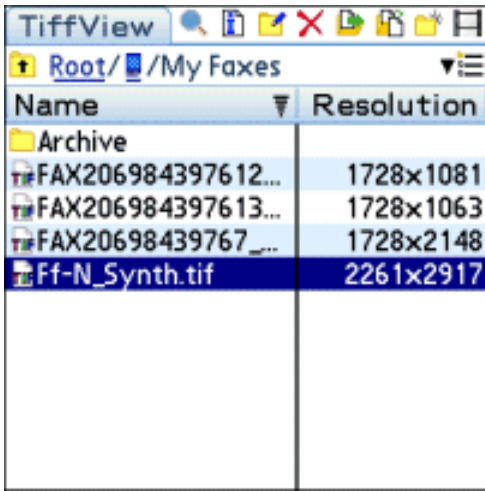
If this does not work (it happens sometimes) you can save image attachments on your memory card (using the same menu) and then opening them with TiffView manually.

- **Image security**

TiffView supports private images and global security options. For details see Security Options in TiffView Reference.

TiffView Reference

File List View



Name	Resolution
Archive	
FAX206984397612...	1728x1081
FAX206984397613...	1728x1063
FAX20698439767...	1728x2148
Ff-N_Synth.tif	2261x2917

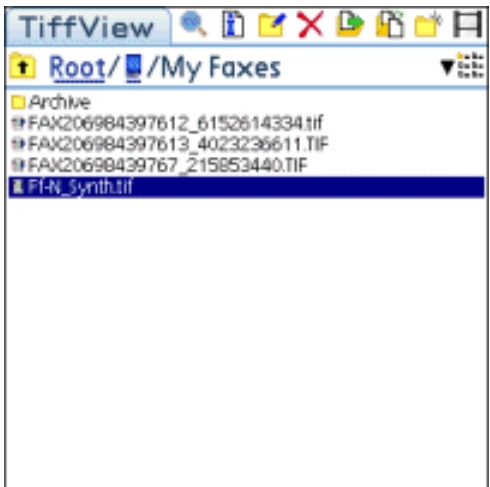
First thing you see when running TiffView is File List View. Here you can browse your images on expansion card or internal memory.

File List View consists of File List, Toolbar, Path Indicator and Mode Selector.

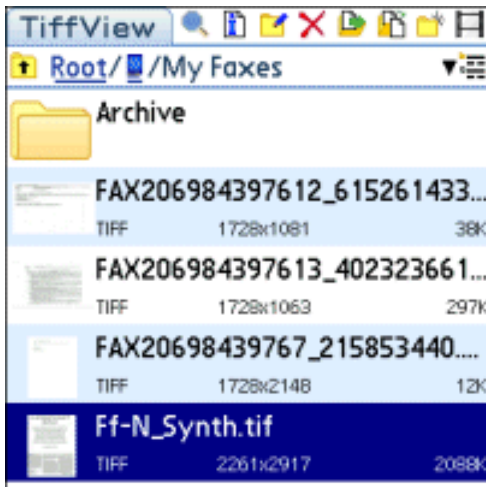
Also there is the program header on top left corner of the screen. The header provides you a different way to open menu by clicking on it.

• File List

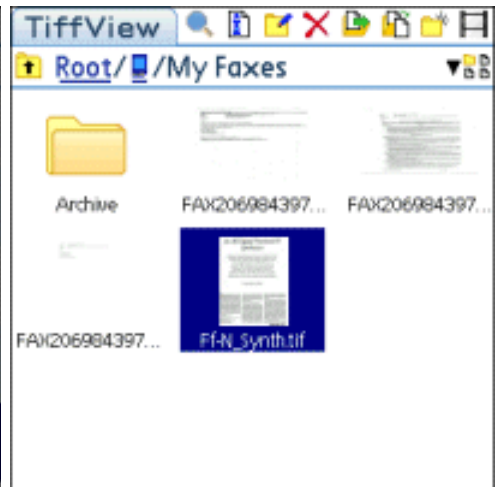
File List has four view modes: table mode (see picture above), list mode, details mode and thumbnail mode. You can select one of them using Mode Selector.



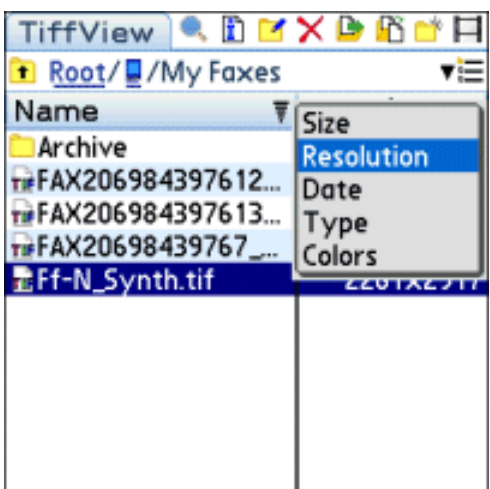
Name	Resolution
Archive	
FAX206984397612_6152614334.tif	
FAX206984397613_4023236611.TIF	
FAX20698439767_215853440.TIF	
Ff-N_Synth.tif	



Name	Resolution	Size
Archive		
FAX206984397612_615261433...	1728x1081	38K
FAX206984397613_402323661...	1728x1063	297K
FAX20698439767_215853440....	1728x2148	12K
Ff-N_Synth.tif	2261x2917	2088K



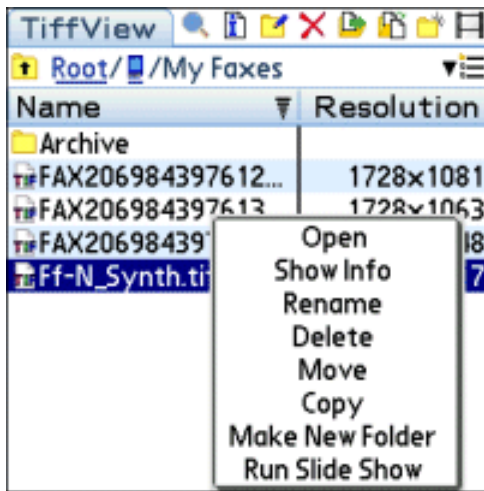
Name	Resolution	Size
Archive		
FAX206984397...		
FAX206984397...		
Ff-N_Synth.tif		



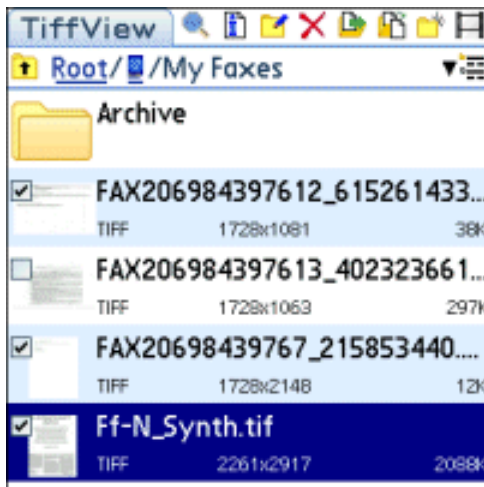
Name	Resolution
Archive	
FAX206984397612...	
FAX206984397613...	
FAX20698439767...	
Ff-N_Synth.tif	

In table mode file list columns can be sorted — you can sort files either by name (left column) or by the value in right column, which can be size, resolution, date, type or colors. *Tap* once on the column header to change sorting order (ascending or descending), or to change sorting column.

To choose right column contents *long tap* (push your stylus and hold it for a while) on its header or use File List Options dialog window that can be accessed by Options->File List menu item. For details see File List Options.



Just *long tap* on the file or folder name in the list and you get a drop-down list of all the actions, accessible at the moment. You can assign another tap to open that list using File List Options dialog window.



Also you can operate with a couple of items simultaneously using multiselect option - just check wanted items.

Multiselect option can be turned on/off by selecting Options->Multiselect menu item.

• Toolbar

All the actions available for selected file or folder are shown on the toolbar.



All the icons are accessible regardless of File List view mode.

- Open

This icon is active only if you have selected an item.

When you select a folder and tap on *Open*, the folder opens. When you select an image file and tap on *Open*, you see the picture.

Also these actions can be performed by tapping on the file or folder name in File List. You can tune it in File List Options dialog window (menu *Options->File List*).

- Image Info

This icon is active only if you have selected an image file.

Image information gives a clue about different file and image parameters. Attach a note to an image using *Note* button and easily view it by tapping on 📁 icon next to the file name in File List.

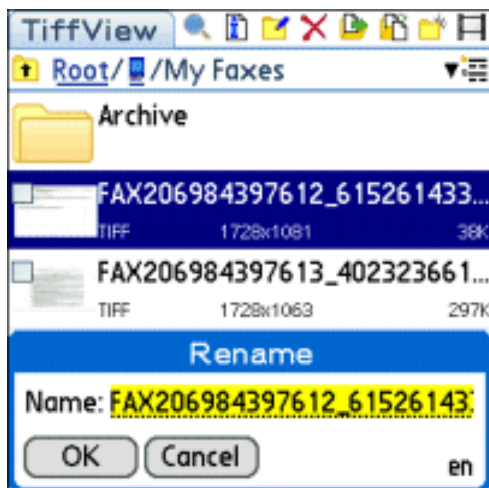
Also here you can check image as private. Security options (show, mask or hide private images) can be set in Change Security form (menu *Options->Security*).



○ 📁 Rename

This icon is active only if you have selected an item.

Use this command when you want to rename image file or folder.



○ ✖ Delete

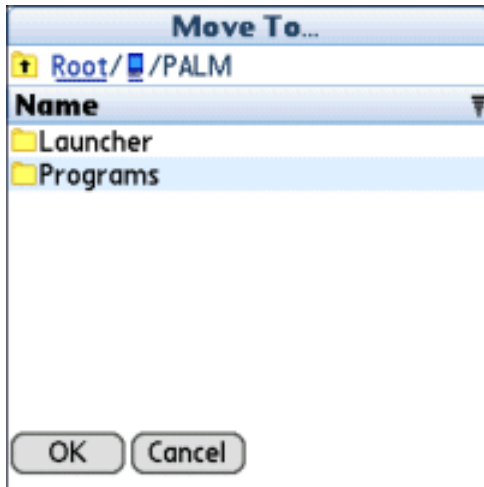
This icon is active only if you have selected an item.

Use this command when you want to delete image file or folder.

-  Move

This icon is active only if you have selected an image file.

Use this command when you want to move image file to another location. You can't move it to the same location.



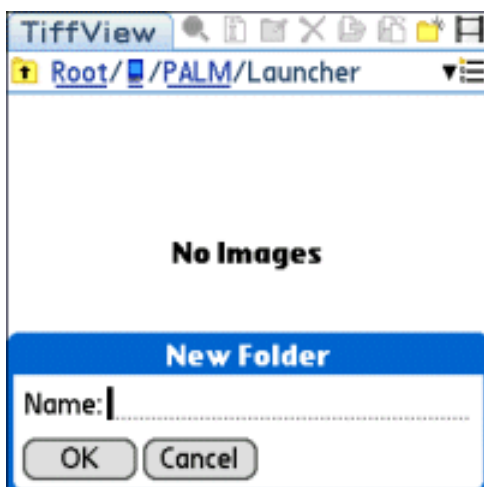
-  Copy

This icon is active only if you have selected an image file.

Use this command when you want to copy image file to another location. You can't copy it to the same location.

-  New Folder

You can create a new folder, if you miss one.



-  Run Slide Show

If you have selected a file, this command shows all images (single TIFF's or the first pages of multipage TIFF's) in the current folder in full-screen mode, starting from the selected one. If selected item is a folder clicking on this icon shows all images (single TIFF's or the first pages of multipage TIFF's) in the folder.

To stop the slideshow just tap once on the picture.

You can enable/disable image auto-rotation mode and tune other Slide Show settings using Slide Show Options form (menu *Options->Slide Show*).

● Path Indicator


Path Indicator is located below the program header.





 Root//Photos & Videos

It includes *up* icon and the path to the open folder.


By clicking on *up* icon -  - you can go one folder up.

● Mode Selector

Mode Selector -  - allows you to select File List view mode. You can see it on the top right corner of File List View, right below Toolbar.

File List has four view modes and Mode Selector has icons for each of them: table mode () , list mode () , details mode () and thumbnail mode () .

Menu

There are two ways to get to the program's menu: first way is to tap the program header, second is to tap Menu button  (it can be a hardware button or a button on your graffiti area – it depends on your device's model).

● Image

Image menu represents operations with images. You have to select an image before using them.

- **Open**

Use it to view selected image. Also it opens selected folder.

- **Send**

Use it to send image via Bluetooth.

- **Beam**

Use it to beam image via Infrared.

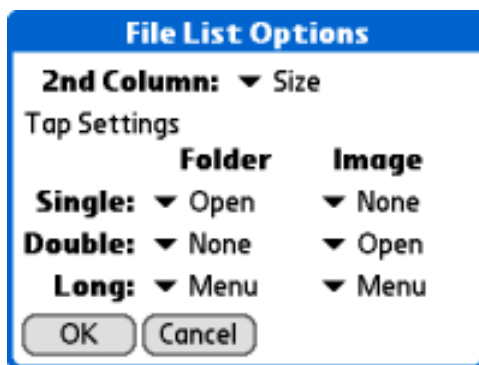
- **Options**

Options menu represents various parameters of TiffView.

- **Multiselect**

Select it to turn on/off multiselect option. Multiselect option allows you to operate with a couple of images simultaneously (for details see File List).

- **File List Options**

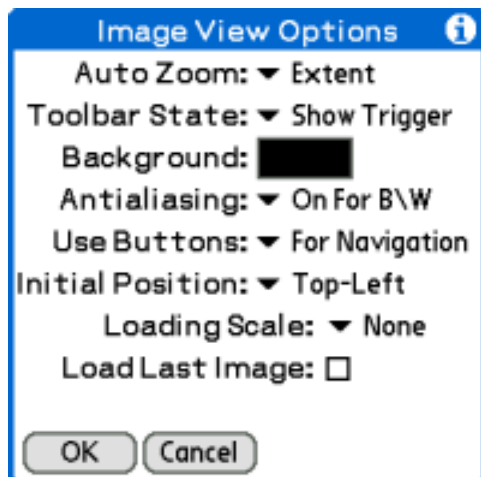


Here you can set value of the second File List column and tap settings to explore files and folders easily.

File List second column can show image size, resolution, date, type or colors number.

You can assign *Open* and *Menu* (opens the context menu) commands to single, double or long tap. You can do it separately for files and folders.

- **Image View Options**



These are the options of image view.

They include:

- Auto Zoom

When Auto Zoom value is set to *Extent* it means, that when you open an image it will be zoomed to fit the screen. If an image is smaller than the screen, the image is going to be enlarged. If an image is larger than the screen, the image will be shrunk.

Also Auto Zoom value can be *None* (no zoom), *W. Extent* (width extent), *H. Extent* (height extent) or exact zoom value: *x0.25*, *x0.5*, *x2*.

- Toolbar State

Defines the initial state of image view toolbar. Select *Show All* to make the toolbar visible by default, *Hidden* or *Show Trigger* - to make it hidden by default (*Show Trigger* makes visible the toolbar trigger).

- Background

Defines Image View background color.

- Antialiasing

Enables or disables antialiasing of image zooming. *Off* disables antialiasing, *On For B\W* enables it only for black and white images, *On For All* enables it for all images.

- Use Buttons

Defines hard buttons functionality (5-Way Navigator or Jog Dial). Set *For Navigation* to use hard buttons for navigation between images, or set *For Panning* to scroll the image using hard buttons.

- Initial Position

Defines image initial position (considering Auto Zoom value in Image View Options).

- Loading Scale

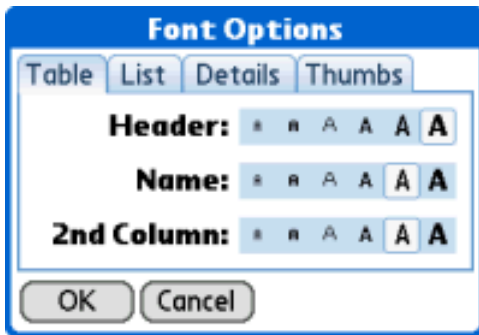
Defines the scale factor that will be applied when loading images.

Select *Extent* to improve performance. But in this way zooming the picture will not give you more details.

- Load Last Image

Check it to open the last image on program startup.

- **Font Options**



Here you can set font size for each of the File List view modes.

- **Slide Show Options**



Slide show options include:

- **Delay**

Defines how many seconds each image of slideshow will be shown.

- **Order**

Defines an order of the slideshow. You can choose sequential or random order.

- **Show Progress**

Defines the way image loading progress bar display.

- **Auto-Rotate**

Defines auto-rotation of images during slide show (for non-square screen devices). Set *Right* to rotate wide (vertical screen) or narrow (horizontal screen) images clockwise; set *Left* to rotate them counter-clockwise.

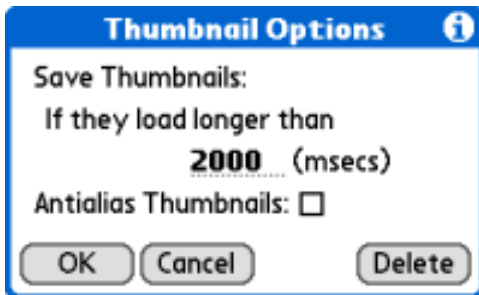
- **Transition**

Defines the type of transition between images during slideshow.

- **Cycle Images**

Check it to make slide show cyclic.

- **Thumbnail Options**



Thumbnails are saved if they load longer than user defined time. Here you can change this limit time.

Also you can check to enable antialiasing for thumbnails.

Delete button deletes all saved thumbnails.

- **Exchange Options**



Here you can allow TiffView to be a default receiver for TIFF images.

When you check *Receive Images* checkbox all images received via Infrared, Bluetooth or from other applications will be saved in the specified folder. You can set it in *Folder* path selector using "... " button.

- **Security Options**



Sets standard privacy record option.

Image View

Unlike the File View, in Image View you can actually *see* image.

You can jump to the next or previous image in current folder using hard buttons (5-Way Navigator or Jog Dial). Also you can set these buttons to scroll the image. For this purpose, use Image View Options dialog window (menu *Options->Image View*).

Also you can zoom image using the keyboard: push *W* or "+" to zoom in; push *S* or "-" to zoom out.

Little red sign - toolbar trigger - in the down-right corner of the screen un-hides several useful options - just tap it. Also you can make these options available by default using Image View Options dialog window (menu *Options->Image View*).

If toolbar is shown you can scroll the image - tap on it and drag.



-  Close

Close the image and return to File List View.

-  Hide

Hide the toolbar.

-  Rotate left

Rotate image 90 degrees counter-clockwise.

-  Rotate right

Rotate image 90 degrees clockwise.

-  Fit height

Fit image height to screen height. If image is longer than the screen, the image will be shrunk. If screen's height is greater than height of the image, the image will be enlarged.

-  Fit width

Fit image width to screen width. If image is wider than the screen, the image will be shrunk. If screen's width is greater than width of the image, the image will be enlarged.

-  Fit width & height

This tool makes image of the maximum size, when it still fits the screen both by the width and by the height.

-  Zoom in

Increase image zoom factor.

-  Zoom out

Decrease image zoom factor.

-  Zoom factor

Zoom factor shows current image scale. You can change it by tapping on the digits. Then you can choose a value from the drop-down list or select *Custom* to set custom scale.